

****Fill out this form then tear off and hand to Event Staff prior to parking your vehicle****



New Zealand Motor Caravan Association

MOTORHOME CARAVAN & LEISURE SHOW

Event Park & Stay Form 2018

Please fill in ONE form PER vehicle

Please ensure you have read the accompanying induction information and completed this form in full.

*Name	
*Contact (Mobile)	
*Email Address	
*Vehicle Registration No.	

By signing this document, I agree to ALL of the conditions as set out in the NZMCA Motorhome, Caravan & Leisure Show's induction guidelines, as given on arrival to the venue, and as pertains to Mystery Creek Events Centre's Health and Safety regulations. I acknowledge these guidelines are designed for my safety and the safety of fellow campers, and should I breach these guidelines, I may be asked to vacate the premises by either MCEC staff, Event staff or Security.

Signed: _____

Event Park & Stay – Information & Induction Sheet

NZMCA Motorhome, Caravan & Leisure Show | 2018



Mystery Creek Events Centre (MCEC) is committed to the goal of achieving zero harm at their venue and ensuring a safe and healthy environment for their visitors, exhibitors, contractors and staff. The purpose of this document is to familiarise Event Park & Stay users with the conditions of use of the camping facilities at the NZMCA Motorhome, Caravan & Leisure Show. We must all comply with the conditions as set out below.

SITE ACCESS: Site access is via Gate 5 (125 Mystery Creek Road).

Enter through Gate 5, continue down the hill and head towards the blue arch. An NZMCA member will be handing out induction information and a registration form, which you need to read and fill out. Hand the signed registration form to the person at the blue arch and an NZMCA member will direct you where to park.

You may arrive at the Event Park & Stay no earlier than 12noon on Thursday 20th September 2018, and no later than 7.00pm. You must vacate the MCEC Event Park & Stay area no later than 6.00pm on Sunday 23th September 2018.

SITE/ INDUCTION RULES

- Pay attention and adhere to all warning signs and barriers around site.
- You **must** clearly display your “General Parking” sign given to you upon arrival
- You are not permitted to enter the event zone at any time, outside of the event open hours.
- Dogs are permitted at the venue (outside of the Event Zone) but must be on a lead at all times. You **MUST** clean up after your dog.
- Do not create trips, slips or fall hazards by leaving items lying around which may cause injury. Pay particular attention to items such as extension leads and any awing structures.
- Abide by any instructions given out by Event staff or MCEC staff or NZMCA volunteers.
- Site speed limit is 15km/h.
- Pedestrians have right of way at all times on site.
- Use roads to travel around site; do not cut across grass where possible.
- The road code rules apply to all roads and will be enforced at all times.
- It is recommended that appropriate footwear is worn at all times.
- Materials must not be stored (temporarily or permanently) on any roadway or pathway. Do not block any fire exit points.
- Only those who have pre-registered for a powered site may access venue power.
- Storm-water drains onsite feed to the Waikato river catchment and disposal of materials into storm-water is strictly prohibited.
- Grey water dump stations are available on site, but are for GREY WATER only (no sewerage disposal). No dumping of waste on the ground, otherwise you will be asked to leave immediately.
- No digging or ground penetration is permitted. Cable lanes are marked on the ground with red spray paint. Do not dig or drive pegs into the cable lanes.
- Inform Security immediately of any incident, accident or damage to property.
- It is recommended that every vehicle carries a fire extinguisher or fire blanket.


GENERAL INFORMATION

- There are 3 toilet blocks and 1 shower block located on site for your use (refer to the attached map).
- If you have paid for a powered site, these have been allocated, and you will be directed to your site. Otherwise all non-powered sites are free of charge, and on a first-in-first-served basis (unless otherwise arrangement for group bookings).
- Grey water disposal (only) is available near the toilet block on the corner of G Street & M Road. Do not empty grey water onto the ground.
- There are numerous taps available for drinkable water (located near most light poles).

Event Park & Stay – Information & Induction Sheet

NZMCA Motorhome, Caravan & Leisure Show | 2018

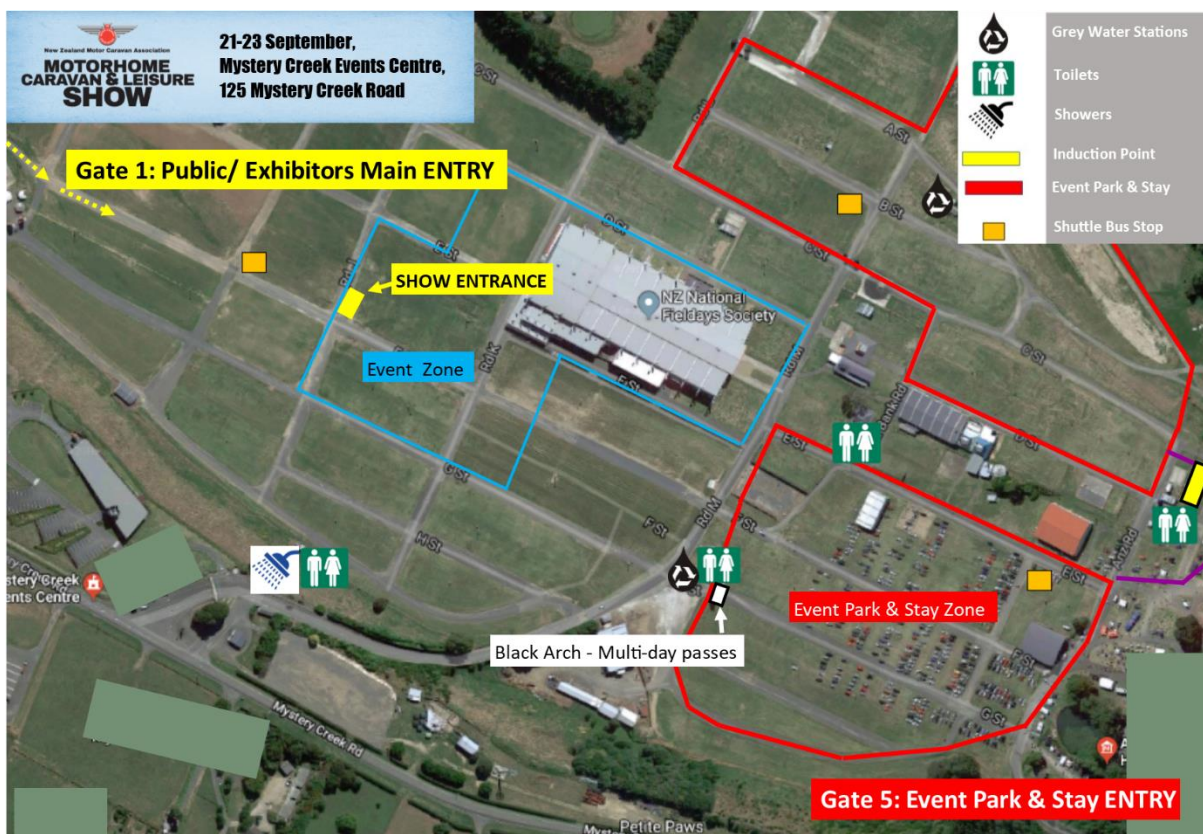


<p>TICKET SALES</p> <p>Make the most of the Show with multi-day passes for \$25, which give you the freedom to enter and re-enter at your leisure for the duration of the Show. These can be purchased at the black Arch (see map below) from 3pm – 7pm Thursday 20th September. Otherwise, both single day passes (\$15) and multi-day passes (\$25) can be purchased at the Show Entry Gate on the days of the event from 9:00am. For Health & Safety reasons, Event Park & Stay attendees must not enter the event zone at any time, prior to the event being open.</p> <p>EVENT HOURS</p> <p>Friday 21st September 2018 9.00am – 5.00pm Saturday 22nd September 2018 9.00am – 5.00pm Sunday 23th September 2018 9.00am – 4.00pm</p>	<p>DAILY DAIRY - New World Glenview</p> <p>Run out of bread, milk, coffee or any of the basics? NO PROBLEM - let New World Glenview deliver it to your site!</p> <p>Text, phone or email your order to Cameron of New World Glenview by 6:00pm (Friday and Saturday only) and your order will be delivered to your site between 6:30am-7:00am the following morning. What could be easier! (Don't forget to quote your NAME and SITE LOCATION when ordering.)</p> <p>Payment by cash or EFTPOS only. A \$5.00 delivery fee will be applied to all orders.</p> <p>Contact Name: Cameron Old Contact Number: 021 988 616 Email: cameron.old@nw.co.nz</p> 
--	---

Complimentary Shuttle Service for Event Park & Stay users

We are proud to announce that Ebbett Holden Hamilton will be providing complimentary shuttle service which will work continuously throughout the weekend to transport users of the Event Park & Stay to and from the Show Entrance. Wave them down at one of our dedicated bus stops if you need a ride. Bus stops indicated on Event Park & Stay map below.

Event Park & Stay Map



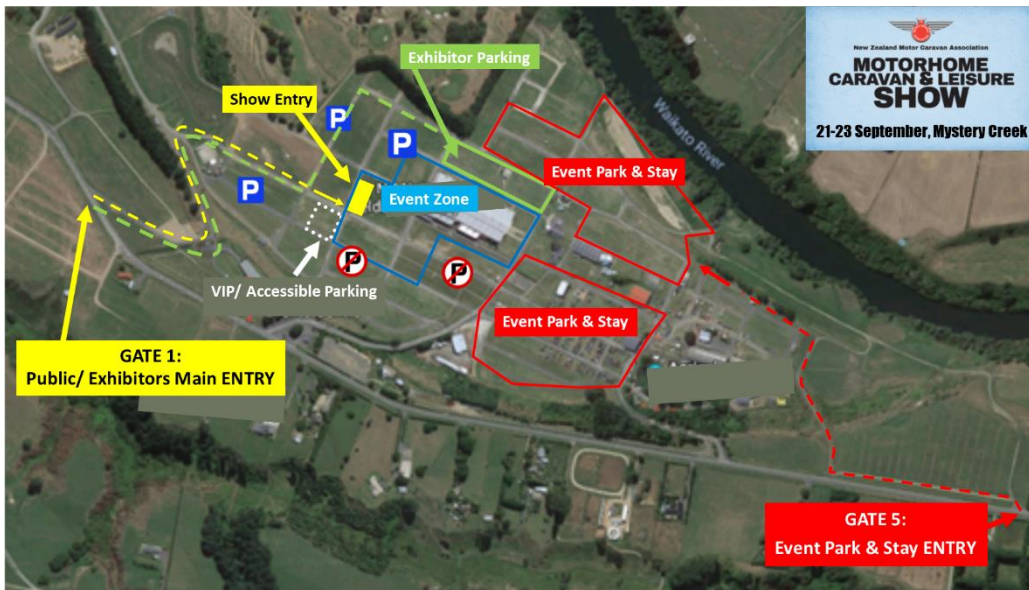
Mystery Creek HQ: 07 843 4497

Event Park & Stay – Information & Induction Sheet

NZMCA Motorhome, Caravan & Leisure Show | 2018



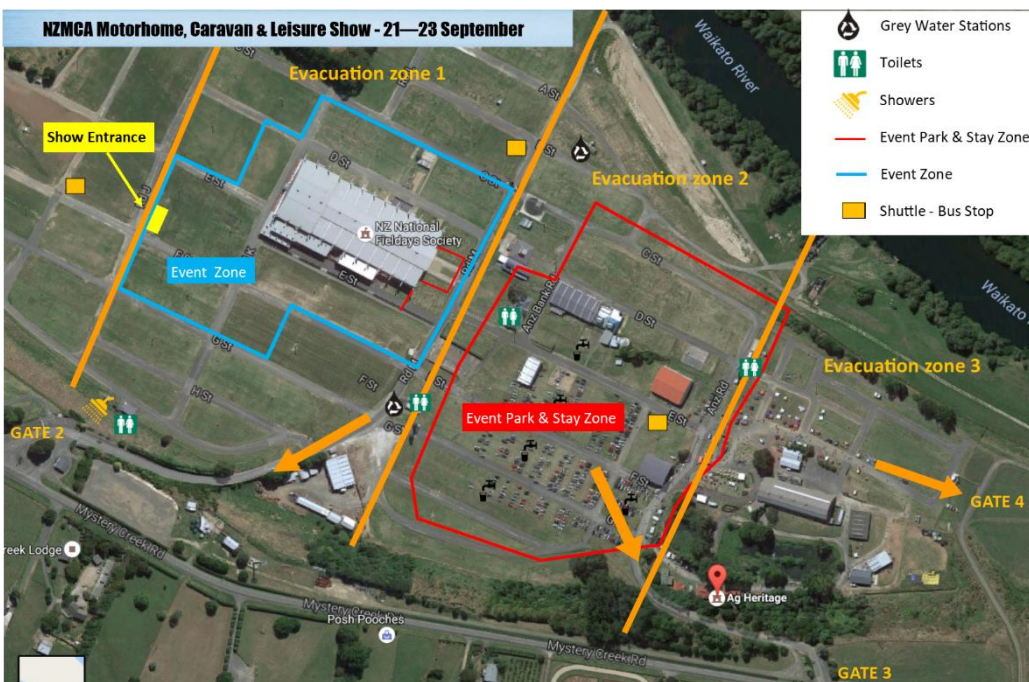
Event Overview Map



EMERGENCY PROCEDURE: In the event of an emergency - **DIAL 111**. Site location for emergency services to attend is **Mystery Creek Events Centre, 125 Mystery Creek Road, Gate 2 access.**

Fire assembly points are to be taken as the roadways well clear of all vehicles and/or buildings. Abide by any safety instructions given out by MCEC staff or Security. A Security Officer will be located at the Gate 2 entrance at all times between 5.00pm and 7.00am, along with a Fire Warden.

EVENT PARK & STAY - EVACUATION PLAN - 2018



Three evacuation zones have been identified on the evacuation plan, please familiarise yourself with the location of these. You may be asked by security or event personnel to move to one of these zones in the case of an emergency requiring evacuation.

Mystery Creek HQ: 07 843 4497

Event Park & Stay – Information & Induction Sheet

NZMCA Motorhome, Caravan & Leisure Show |2018



AFTER HOURS ACCESS:

The Main Entrance for the Event Park & Stay is Gate 3 will be open between the hours of 7.00am – 7.00pm. A Security Guard will be posted at the Gate 2 between 5.00pm – 11.00pm each evening to allow access for campers into the venue. Between the hours of 11.00pm and 7.00am there will be NO access into the venue. You can exit the venue at any time, but entry must be before 11.00pm.

IMPORTANT NOTICE – Electrical Connections for Event Park & Stay Sites

ALL VEHICLES MUST HAVE A CURRENT ELECTRICAL W.O.F. IN ORDER TO CONNECT TO VENUE POWER

Before you arrive – Caravans and motorhomes connected to the MCEC electrical supply using a standard caravan plug will be connected via an RCD (Residual Current Device) in the power boxes. This is a safety device which automatically switches off the circuit should it detect a fault. Apart from new caravans, some caravans are wired with a Neutral to Earth connection. This connection is detected by the RCD as a fault and it will in turn, trip the circuit. Please bring this information to the attention of your electrician or the company you hire your vehicle from. They will need to check and make the necessary changes (and document this in writing).

After the event – the wiring needs to be reinstated to its original configuration. Failure to do so and subsequent use of non RCD power in your vehicle could lead to serious damage and could be fatal. MCEC staff are unable to ask site electricians to make this modification.

DISCLAIMER: Neither the organisers nor any associated persons will be held responsible for any damage, illness, injury, accident, loss or death of any persons, or property, as a result of taking part in the NZMCA Motorhome, Caravan & Leisure Show Event Park & Stay 2018.